

DATAMARS  
**Livestock™**

You can't manage  
what you don't  
measure.

Weighing solutions and readers for  
precise, informed, and efficient  
animal management.

**Tru-Test™**  
DATAMARS



# Our philosophy is rooted in the idea that informed decisions create real impact.

Datamars Livestock, a division of the international Datamars group, offers an ecosystem of integrated solutions - from identification to weighing, from monitoring to electric fencing - to make livestock management safer, more efficient, and more sustainable. Within this ecosystem, Tru-Test has been developing reliable, accurate, and intuitive technologies for over forty years, transforming every measurement into useful information for making better, faster decisions based on real data.

From weighing to animal health, from monitoring milk production to managing individual data, everything we do is designed to support those who work with passion, precision, and responsibility. Tru-Test solutions simplify data collection and processing, improving traceability, productivity, and animal welfare. Thanks to integration with the Datamars Livestock Cloud Software, data management becomes automatic, secure, and always accessible, allowing you to track individual and group performance clearly and instantly.

With this catalogue, Datamars Livestock guides you through a complete range of smart, connected solutions to measure, analyze, and optimize every aspect of livestock management.



Tru-Test

XRS5000

450

Q W E R T Y U I O P 1 2 3  
A S D F G H J K L 4 5 6  
Z X C V B N M 7 8 9  
0

# General Index

**WEIGH SCALE INDICATORS** 10-14



**LOAD BARS** 15-17



**WEIGHING PLATFORMS** 18-19



**ELECTRONIC IDENTIFICATION (EID) READERS** 20-23



**ACCESSORIES FOR WEIGHING AND EID READERS** 24-29



**DATA MANAGEMENT AND REPORTING** 30-31



# Why Weigh?

Weighing animals does not simply mean knowing their weight but **turning each measurement into a strategic data point** for herd management. Weight is an immediate indicator of **well-being, nutritional status, and productivity**; tracking its trend over time allows for faster, more targeted, and data-driven decisions.

Regular weighing makes it possible to **monitor growth and feed efficiency, promptly detect potential health issues, and optimize feeding programs and genetic selection.**

In calves and lambs, early weight measurement reveals **their growth potential and future productivity**; in heifers and dairy cows, it helps **assess body condition, fertility, and milk yield.** For beef cattle or fattening sheep, knowing the precise weight means **determining the ideal selling time,** maximizing profitability while reducing feed costs and waste.

Beyond production aspects, weighing also supports **animal health and environmental sustainability.** Accurate weight data allows for **precise dosage calculation of veterinary treatments,** reducing drug use and the risk of resistance, while more efficient growth and



replacement management helps **lower emissions per head and the carbon footprint of the farm.**

Thanks to **Datamars Livestock weighing systems and readers,** data collection becomes **fast, accurate, and fully automated.** Weights are automatically linked to each animal's electronic ID and integrated with farm management systems, providing a **complete overview of individual and group performance.**

Regular weighing is not just a good practice — it is **a true tool for continuous improvement and control,** enabling farmers to **anticipate problems, boost productivity, and make the farm more efficient, sustainable, and profitable.**





Tru-Test  
DATAMARS

XR5000

✓ Weight updated for EID="380098990888138"

692 kg

-10 kg/day

15

- Reweight
- Animal
- Session
- Fix Tag
- Options

DOB:

Dam:

Sex:

Sire:

ADG:

LWG:

Count:

LID:  Enter to look up

VID:  Enter to look up

EID: 380098990888138

W E R T Y U I O P  
A S D F G H J K L  
Z X C V B N M

1 2 3 4 5 6 7 8 9 0

ENTER

# Why doesn't weighing take any time?

**Weighing animals** is often perceived as a complex operation that requires time, organization, and dedicated labor. In reality, when properly integrated into the farm's routine, it becomes an **extremely efficient activity that does not interfere with daily workflows.**

Modern weighing solutions make it possible to **capture the animal's weight during operational moments that are already part of the routine**, without the need to schedule specific sessions or alter the farm's organization. Today, weighing can take place while animals are already being moved for other purposes: health treatments, group sorting, veterinary checks, or simple internal transfers. As a result, the entire operation requires **very little additional time.**

The scales and electronic identification readers communicate with each other, automatically recognize each animal, and **record the weight accurately, with no manual input required.** Data automation ensures that information is collected without



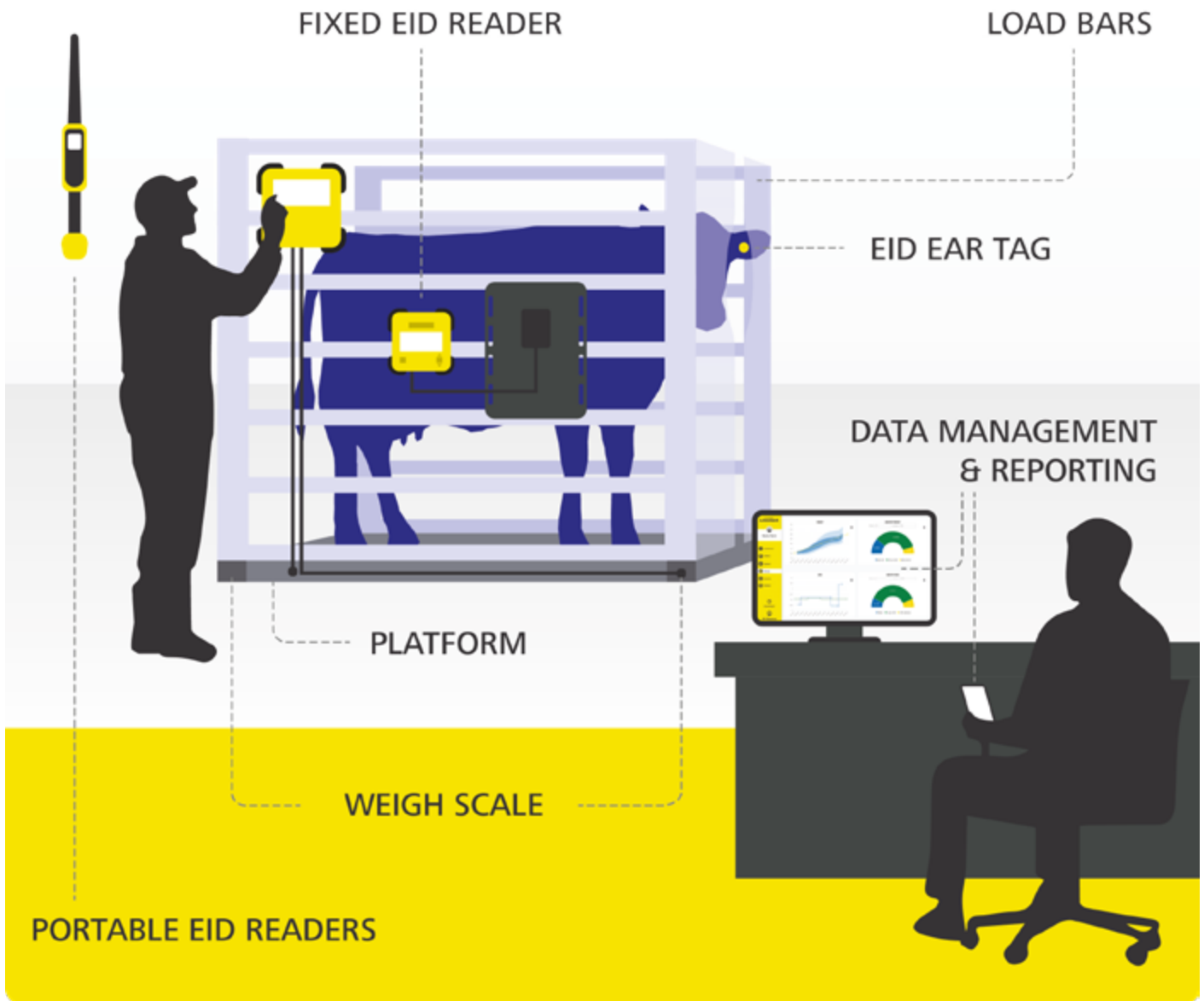
interrupting the farmer's work: the system logs and stores weights in real time, automatically links them to each animal, and integrates them with management platforms. **Weighing thus becomes a natural part of the routine, eliminating paperwork, transcription errors, and additional administrative tasks.**

In this way, **weighing is not only easy to perform but also sustainable in the long term, as it enables continuous monitoring of growth, health, and productivity without increasing the operational workload.**

In a sector where timely decision-making is increasingly crucial, obtaining reliable data without sacrificing hours of work is a strategic advantage. With technologies such as Tru-Test systems, **weighing becomes a highly efficient practice: discreet in daily operations yet essential for faster, more targeted, and better informed decisions.**

# How Weighing Solutions and Electronic Identification (EID) Work Together

Discover how our weighing and electronic identification products work in synergy to simplify animal management.



Visit our YouTube channel!

[www.youtube.com/@datamarslivestockeu4498](https://www.youtube.com/@datamarslivestockeu4498)



# Scale indicators

**Tru-Test weigh indicators** represent the **electronic core of every reliable weighing system**.

Designed to deliver **accuracy, speed, and ease of use**, they receive, process, and display data from the load bars, turning weighing into a **quick, precise, and fully automated activity**.

The exclusive **Superdamp™** technology from Tru-Test **stabilizes weight readings within seconds**, even with restless animals, ensuring **consistent and reliable measurements**.

The **automatic zero function** after each weighing **simplifies operations** and guarantees **accurate results every time**.

Weigh indicators are the **central electronic unit** of the system: they **display real-time weight** and allow users to **record, store, and analyze** collected data.

They can be **connected to management software and mobile**

**applications** for complete data handling, making it easier to analyze performance and make data-driven decisions.

Built to **withstand the toughest working conditions**, they combine **durability and advanced technology** to suit any type of livestock operation. When used together with Tru-Test **EID readers** and **load bars**, they **automatically link weight data to each animal's electronic ID**, improving **traceability, management, and profitability across the herd**.

**Reliable, intuitive, and easy to use**, Tru-Test weigh indicators are the **ideal choice for anyone seeking precision, control, and efficiency in livestock weighing**.

## MAIN FEATURES:



**FAST & ACCURATE  
READINGS**



**RELIABLE  
TECHNOLOGY**



**AUTOMATIC DATA  
MANAGEMENT**



**INTUITIVE USE**

# XR5000

Product code: 880 0000-182

## TOP-LEVEL PERFORMANCE

For those focusing on advanced analysis, customization and full data control.

- ✓ Stores 1 million records in 1,000 weigh sessions
- ✓ Stores 100 pieces of custom information per animal
- ✓ Store up to 4 tags (visual or electronic for each animal)
- ✓ Allows up to 10-way sorting by custom criteria
- ✓ Calculates dosage by weight and tracks treatments with alerts for withholding periods
- ✓ Battery life: 10 hours with backlight on; 13 hours with backlight off



# ID5000

Codice articolo 880 0000-787

## FUNCTIONALITY & CONTROL

For those who want more data, more filters, and more comprehensive operational management.

- ✓ Stores to 1 million records in 1,000 weigh sessions
- ✓ Stores 3 pieces of custom information per animal
- ✓ Store up to 3 tags (visual or electronic for each animal)
- ✓ Allows up to 5-way sorting by weight, weight gain and single criteria
- ✓ Calculates dosage by weight and tracks treatments with alerts for withholding periods
- ✓ Long-life battery: 10 hours with backlight on, 13 hours with it off





## JR5000

Product code: 880 0010-832

### SIMPLICITY WITH TRACEABILITY

For those starting to manage individual animal data with ease.

- ✓ Stores to 1 million records in 1,000 weigh sessions
- ✓ Stores 1 piece of information per animal
- ✓ Store up to 2 tags (visual or electronic for each animal)
- ✓ Allows up to 5-way sorting by weight
- ✓ 10 hrs with backlight on and 13 hrs with backlight off



## S3

Product code: 880 0002-591

### ESSENTIAL & ACCURATE

For those looking for simple and reliable weighing, without additional functions.

- ✓ Records an unlimited number of weighing sessions and weights
- ✓ Simple to use
- ✓ Rugged and waterproof
- ✓ Up to 20 hours of run time and only 6 hours to recharge



# SCALE INDICATORS COMPARISON

TECHNICAL INFORMATION	XR5000	ID5000	JR5000	S3
Is my indicator visible in direct sunlight?	<input checked="" type="checkbox"/>	<input checked="" type="checkbox"/>	<input checked="" type="checkbox"/>	<input checked="" type="checkbox"/>
Is my indicator water and dust proof?	<input checked="" type="checkbox"/>	<input checked="" type="checkbox"/>	<input checked="" type="checkbox"/>	<input checked="" type="checkbox"/>
Can I view statistics on screen in the field?	<input checked="" type="checkbox"/>	<input checked="" type="checkbox"/>	<input checked="" type="checkbox"/>	<input type="checkbox"/>
Can I view animal history on screen in the field?	<input checked="" type="checkbox"/>	<input checked="" type="checkbox"/>	<input checked="" type="checkbox"/>	<input type="checkbox"/>
Can I easily set up my scale by using preloaded setup?	<input checked="" type="checkbox"/>	<input checked="" type="checkbox"/>	<input checked="" type="checkbox"/>	<input type="checkbox"/>
Can animals be sorted by weight gain or single criteria?	<b>Multi criteria</b> (by breed, weight, weight gain, and custom settings)	<b>Single criteria</b> (by breed, weight, weight gain, and custom settings)	<b>Single criteria</b> (only by breed)	<input type="checkbox"/>
How many groups can I create for sorting livestock?	10	5	5	<input type="checkbox"/>
Does my indicator have automatic Tru-Test load bar recognition and calibration?	<input checked="" type="checkbox"/>	<input checked="" type="checkbox"/>	<input checked="" type="checkbox"/>	<input checked="" type="checkbox"/>
DATA COLLECTION & RECORDING	XR5000	ID5000	JR5000	S3
How many individual records can I store?	1 Million	1 Million	1 Million	<input type="checkbox"/>
How many weighing sessions can I keep?	1.000	1.000	1.000	<input type="checkbox"/>
How many custom traits can I record per animal?	100	3	1	<input type="checkbox"/>
Can the indicator receive data from the electronic identification (EID) reader via Bluetooth?	<input checked="" type="checkbox"/>	<input checked="" type="checkbox"/>	<input checked="" type="checkbox"/>	<input type="checkbox"/>
Can I link weights & other data to the animal's visual and EID on the indicator?	<input checked="" type="checkbox"/>	<input checked="" type="checkbox"/>	<input checked="" type="checkbox"/>	<input type="checkbox"/>



DATA TRANSFER	XR5000	ID5000	JR5000	S3
Is the indicator compatible with the Datamars Pro app?	✓	✓	✓	✓
Can I use a USB flash drive to get information off the weigh scale?	✓	✓	✓	—
Can I use Bluetooth to transfer data recorded on the indicator to the Datamars Pro app after session is complete?	✓	✓	✓	—
Can I use Bluetooth to send weights from the indicator to the Datamars Pro app in real-time?	—	—	—	✓
CALCULATIONS	XR5000	ID5000	JR5000	S3
Will the indicator calculate weight gain?	✓	✓	✓	—
Will the indicator calculate carcass weight?	✓	—	—	—
Will the indicator calculate dosage of animal health products based on weight?	✓	✓	—	—

# Load bars

**Tru-Test load bars** form the **foundation of every reliable weighing system**. Designed to ensure **accuracy, durability, and versatility**, they are ideal for all types of livestock operations and **integrate perfectly with Tru-Test weigh indicators**.

**They are the mechanical core of the system:** positioned under the **platform or crush**, they convert the **animal's weight into an electronic signal**. The **internal load cells** measure the applied pressure and **transform it into numerical data**, sending it to the weigh indicator for an instant and accurate reading.

Made from **strong, corrosion-resistant materials**, they deliver **consistent performance** even in the most demanding conditions. The **robust, weld-free design** minimizes the risk of damage, while the **sealed construction** protects the load cells from **dirt,**

**moisture, and external agents**, ensuring **stable and precise readings over time**.

Available in **different lengths and capacities**, they fit a wide range of **platforms, crushes, or custom systems**, offering **quick installation and easy portability**. When combined with **Tru-Test weigh indicators** and **EID readers**, they automatically **record weights and link them to each animal's electronic ID**, improving **data collection** and **overall productivity on the farm**.

**Reliable, precise, and easy to use**, they are the **ideal choice for anyone seeking accuracy and performance in every weighing session**.

## MAIN FEATURES:



**ROBUST  
STRUCTURE**



**ACCURATE  
WEIGHING**



**EASY  
INSTALLATION**



**VERSATILE  
USE**

# MP600

Product code: 880 0000-202

## LIGHTWEIGHT AND PRACTICAL

For those who need compact and easily transportable bars, ideal for mobile installations or tight spaces, offering precision and ease of use.

- ✓ 600 mm long
- ✓ 2,000 kg capacity
- ✓ Corrosion-resistant design featuring a galvanized steel housing that safeguards the bar
- ✓ Equipped with rubber feet for enhanced grip and shock protection



# MP800

Product code: 880 0000-240

## VERSATILITY AND RELIABILITY

For those looking for robust and stable multipurpose load bars, suitable for platforms or crates of various sizes, ensuring precise and consistent weighing.

- ✓ 800 mm long
- ✓ 3,000 kg capacity
- ✓ Corrosion-resistant design featuring a galvanized steel housing that safeguards the bar
- ✓ Equipped with rubber feet for enhanced grip and shock protection



# HD5T

Product code: 880 0000-565

## ROBUSTNESS AND HIGH CAPACITY

For those who require exceptionally high performance in intensive applications, with outstanding durability and long service life.

- ✓ 1010 mm long
- ✓ 5,000 kg capacity for mounting heavy chutes
- ✓ Heavy-duty construction
- ✓ Easy Installation: Bolt it to the chute, then secure it to the concrete surface



## COMPARATIVE TABLE OF LOAD BARS

	MP600	MP800	HD5T
Does it support weighing show livestock in a crate or on a platform?	✓	✓	—
Does it support weighing sheep or goats in a crate or alleyway system?	✓	✓	—
Does it support weighing cattle in stationary alleyways with a platform?	✓	✓	—
Does it support weighing cattle in portable systems with a platform?	✓	✓	—
Does it support weighing cattle in manual chutes?	—	—	✓
Does it support weighing cattle in hydraulic chutes?	—	—	✓
Does it support weighing horses?	—	✓	—

# Platforms

**Tru-Test weighing platforms complete** weighing systems by offering a **robust, lightweight, and safe solution**, designed to ensure **accuracy and convenience** in every operation.

They are **perforated aluminium surfaces** on which the animal stands, engineered to provide **stability, comfort, and safety** during weighing.

The **one-piece, weld-free design** ensures a **rigid and durable structure**, minimizing the risk of deformation and guaranteeing **stable and precise readings** over time. The **perforations** allow for **liquid drainage** and **faster cleaning**.

They connect directly to **load bars**, converting the measured weight into **accurate digital data**. The **folded outer edge** and **low-profile bolts** help prevent **hoof injuries** and reduce **stress**

**during weighing**, also improving **operator safety**.

Made of **lightweight, corrosion-resistant aluminium**, Tru-Test platforms are **easy to install, move, and clean** - ideal for use in **weighing alleys** or **temporary setups**.

Combined with **Tru-Test load bars and weight indicators**, they offer a **complete and reliable precision weighing system** for any type of livestock operation.

**Durable, practical, and dependable, they are the ideal choice for those seeking safety, accuracy, and functionality.**

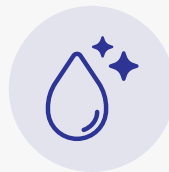
## MAIN FEATURES:



**ROBUST & DURABLE  
DESIGN**



**LIVESTOCK SAFETY**



**EASY CLEANING**



**PORTABILITY**

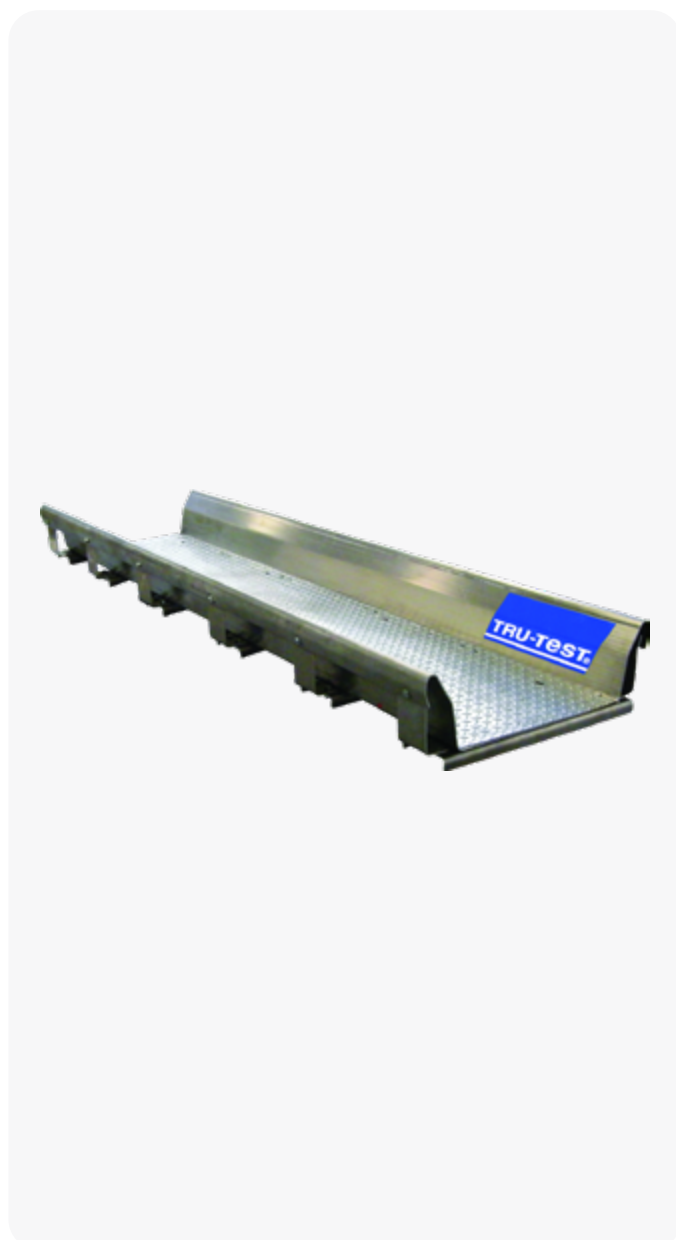
# ALUMINUM WITH PERFORATED SURFACE 2.2 M PLATFORM

Product code: 880 0000-081

## CLEANING AND SAFETY

For those looking for a draining surface that facilitates cleaning while ensuring stability and safety during weighing.

- ✓ Perforated surface: holes in the surface allow immediate drainage of water and manure, keeping the platform drier and cleaner between weighing
- ✓ Robust and lightweight aluminium structure, with corrosion-resistant stainless steel bolts (no welded joints), to reduce the risk of breakage
- ✓ Designed to fit all Tru-Test 600 mm load bars. Ideal for both permanent and temporary installations
- ✓ Quick installation and relocation: simply place the platform on a flat surface. The rope handle allows it to be carried by a single person
- ✓ Compact weld-free design: the one-piece platform is rigid and strong along its entire length, supporting accurate weighing
- ✓ Angled platform sides help centre the animal during weighing



# EID Readers

**Tru-Test EID readers** are the key component for **automatically identifying each animal** and linking weight and performance data to its **electronic ear tag (RFID microchip)**. **Electronic identification (EID)** enables complete **lifetime traceability, securely and automatically** recording all relevant health, reproductive, and production information for **each animal**.

**Tru-Test by Datamars Livestock**, in collaboration with farmers worldwide, has developed a **range of EID readers** renowned for their **reliability, reading speed, and ease of use**.

Available in **portable (stick reader)** and **fixed** versions, they **integrate seamlessly with scales, weigh indicators, and management software**, ensuring **fast and accurate data collection** in any operating environment.

When combined **with Tru-Test weigh indicators**, the EID readers **automatically link** each animal's **weight to its electronic ID**, improving **accuracy, traceability, and overall herd management**.

All information is **stored directly in the indicator** and can be **viewed or transferred in real time** to farm management systems, making work **more efficient, secure, and profitable**.

**Reliable, fast, and easy to use**, Tru-Test EID readers are the **ideal choice for anyone seeking precision, efficiency, and control** in animal management.

## MAIN FEATURES:



**FAST AND SAFE  
READING**



**PRECISE  
IDENTIFICATION**



**DATA COLLECTION  
AND TRANSFER**



**TIME SAVING**

# PORTABLE SRS2i STICK READER

Product code: 880 0004-657

## EFFICIENT READING AND RECORDING

For those who want to quickly read and record each animal's data in a simple and accurate way, even under the most demanding working conditions.

- ✓ 250,000 tag memory
- ✓ View EID and visual tag info for accuracy confirmation
- ✓ Reads all FDX-B and HDX tags
- ✓ Accepts uploaded EID/VID matched pairs
- ✓ Bluetooth wireless technology for scale connectivity



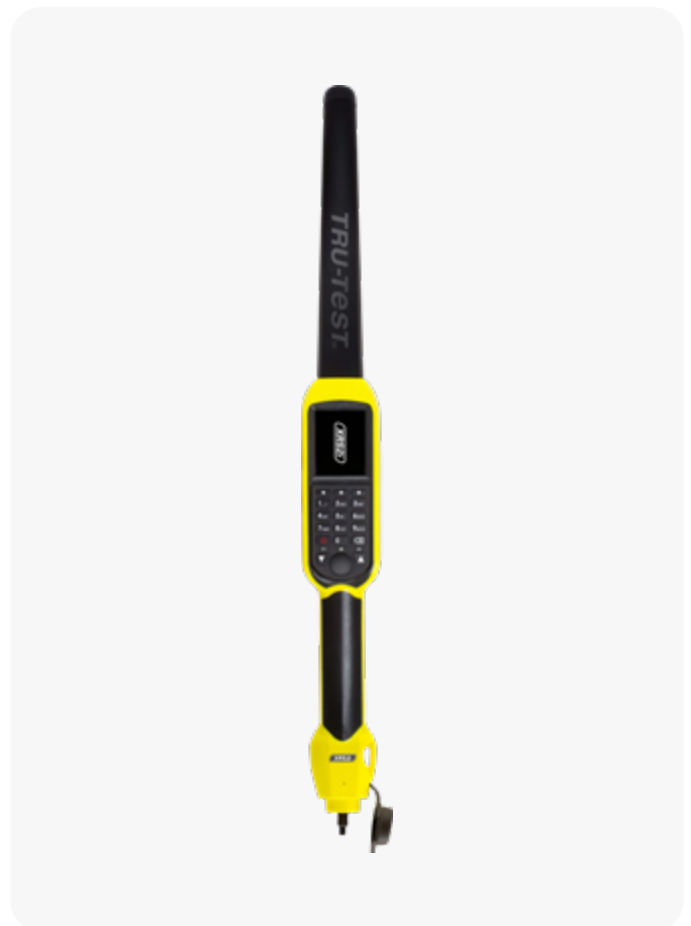
# PORTABLE XRS2i STICK READER

Product code: 880 0004-656

## COMPLETE DATA MANAGEMENT

For those who want to read, record, and edit each animal's information, with customizable functions and advanced data collection directly in the field.

- ✓ 1 million tag memory
- ✓ Capture up to 15 customizable pieces of information per animal
- ✓ Reads all FDX-B and HDX tags
- ✓ Accepts uploaded EID/VID matched pairs
- ✓ Alpha-numeric keypad for flexible data entry
- ✓ Bluetooth wireless technology for operation with a connected scale



# XRP2i PANEL READER

Product code: 880 0004-608

## FAST AND RELIABLE IDENTIFICATION

For those who need precise and consistent electronic reading, ideal for permanent installations or high-traffic animal passage areas.

- ✓ Reads all FDX-B and HDX tags
- ✓ Functions as a standalone tag recorder and animal counter or sends tag numbers to a Tru-Test scale
- ✓ Requires a large or small antenna



# SMALL ANTENNA

Product code: 880 0000-259

## COMPACT AND PRECISE

For those looking for a lightweight and easy-to-handle solution, perfect for tight spaces and weighing corridors, with reliable and continuous readings.

- ✓ For sheep, goats or swine
- ✓ Read distance: 700 mm
- ✓ Dimensions: 40 × 43 cm
- ✓ Rugged design
- ✓ Easy installation
- ✓ Only compatible with the XRP2i Panel Reader



# LARGE ANTENNA

Product code: 880 0000-779

## EXTENDED COVERAGE

For those managing wide passage areas or large animals, with stable and highly sensitive reading in every work session.

- ✓ For cattle or deer
- ✓ Read distance: up to 1 m
- ✓ Dimensions: 61 × 86 cm
- ✓ Rugged design
- ✓ Easy installation
- ✓ Only compatible with the XRP2i Panel Reader



## COMPARATIVE TABLE OF EID READERS

	SRS2i	XRS2i	XRP2i
Is it portable and easily transportable to multiple locations with minimal setup?	✓	✓	—
Can data with EID/VID matched pairs be uploaded from the PC?	✓	✓	—
Is it capable of scanning EID tags and collect customized data directly in the field?	—	✓	—
Is it capable of sending EID numbers to an Indicator in real-time?	✓	✓	✓
Is the EID reader compatible with the antennas?	—	—	✓



# 5000 SERIES POWER ADAPTOR

Product code: 880 0000-453

- ✓ For 5000 series scales
- ✓ Included: Multi-region AC adaptor

This accessory is included as standard with the applicable product and can be ordered as a replacement or as an additional spare.



# XRP2i POWER ADAPTOR

Product code: 880 0000-604

- ✓ For XRP2i EID panel reader
- ✓ Compatible for European and UK power leads

This accessory is included as standard with the applicable product and can be ordered as a replacement or as an additional spare.



# 5000 SERIES PLASTIC CARRY CASE

Product code: 880 0002-165

- ✓ Tough & durable
- ✓ For 5000 Series scale indicator

This accessory is included as standard with the applicable product and can be ordered as a replacement or as an additional spare.



# FIXED MOUNTING BRACKET

Product code: 880 0000-518

- ✓ For use to mount Tru-Test scale indicators or XRP2i EID panel reader on flat surface or pipe

This accessory is included as standard with the applicable product and can be ordered as a replacement or as an additional spare.



# 5000 SERIES 12V CHARGING KIT

Product code: 880 0000-322

- ✓ For 5000 series scales
- ✓ Includes: 12V Adaptor connection (vehicle or battery)



# XRP2i 12V POWER CABLE

Product code: 880 0000-510

- ✓ For XRP2i EID panel reader

This accessory is included as standard with the applicable product and can be ordered as a replacement or as an additional spare.



# XRS2i & SRS2i CHARGING KIT

Product code: 880 0003-455

- ✓ For XRS2i, SRS2i, & ERS EID readers
- ✓ Includes: 5V Multi-region adaptors & USB Cable



# XRS2i & SRS2i CARRY BAG

Product code: 880 0000-536

- ✓ Polyester material
- ✓ For XRS2i & SRS2i EID stick readers and accessories
- ✓ Includes shoulder strap

This accessory is included as standard with the applicable product and can be ordered as a replacement or as an additional spare.



# ADJUSTABLE MOUNTING BRACKET

Product code: 880 0000-754

- ✓ For use to mount Tru-Test scale indicators or XRP2i EID panel reader on flat surface or pipe



# S3 INDICATOR MOUNTING BRACKET

Product code: 880 0002-732

- ✓ For mounting on a flat surface or pipe
- ✓ Included with S3 Indicator
- ✓ Hardware is not included

This accessory is included as standard with the applicable product and can be ordered as a replacement or as an additional spare.



# USB TO SERIAL ADAPTOR CABLE

Product code: 880 0000-894

- ✓ Connects the PC to EID panel or EID stick reader

This accessory is included as standard with the applicable product and can be ordered as a replacement or as an additional spare.



# CABLE USB SERIES A TO MINI-B

Product code: 880 0002-615

- ✓ Connects the PC to 5000 Series indicators, XRS2i & SRS2i EID stick readers

This accessory is included as standard with the applicable product and can be ordered as a replacement or as an additional spare.



# USB CABLE - USB A TO MICRO B

Product code: 880 0002-731

- ✓ Used for S3 indicator charging



# HD5T LOAD BAR EXTENSION CABLE

Product code: 880 0010-910

- ✓ Length: 3 m
- ✓ Used to extend the connection between the load bars and the weight indicator



# CABLE C16 TO D9 SERIAL AND '5V DC' C16

Product code: 880 0000-665

- ✓ For 5000 Series indicator usage
- ✓ Provides 2 serial connection ports enabling simultaneous battery charging





# XRP2i SERIAL CABLE

Product code: 880 0000-828

- ✓ Connects the XRP2i EID panel reader to scale indicator and other devices

This accessory is included as standard with the applicable product and can be ordered as a replacement or as an additional spare.



# XRP2i ANTENNA EXTENSION CABLE

Product code: 880 0000-306

- ✓ Length: 548 cm
- ✓ For XRP2i EID panel reader

This accessory is included as standard with the applicable product and can be ordered as a replacement or as an additional spare.



# CABLE C16 TO D9 SERIAL

Product code: 880 0000-371

- ✓ Connects 5000 Series indicators & EziWeigh7i indicator to EID stick reader



# Data management & reporting

**Data management is the key step in turning measurements into valuable insights.** The **Datamars Livestock Cloud Software** collects and centralizes all data from **Tru-Test weight indicators and EID readers**, allowing users to **view charts, generate reports, and monitor growth trends** from any device connected to the Internet.

**Interactive dashboards** transform complex data into **intuitive graphs and reports**, making it easy to compare **animals, groups, or growth periods**, and supporting **immediate decisions based on real data**. **Integration with Tru-Test weighing solutions** fully automates data collection, **eliminating transcription errors** and ensuring **complete traceability**.

**Thanks to the Datamars Pro application**, data can be **transferred and shared, viewed remotely, and automatically stored in the Cloud**, removing the need for manual records.

All information is organized within a **single system**, always **up to date and easily accessible**, for **complete, efficient, and integrated farm management**.

**Reliable, intuitive, and secure**, the **Datamars Livestock Cloud Software** is the ideal solution to **turn data into value and improve farm productivity**.

## MAIN FEATURES:



**AUTOMATIC  
SYNCHRONIZATION**



**CLEAR INSIGHTS**



**ACCESS ANYWHERE**

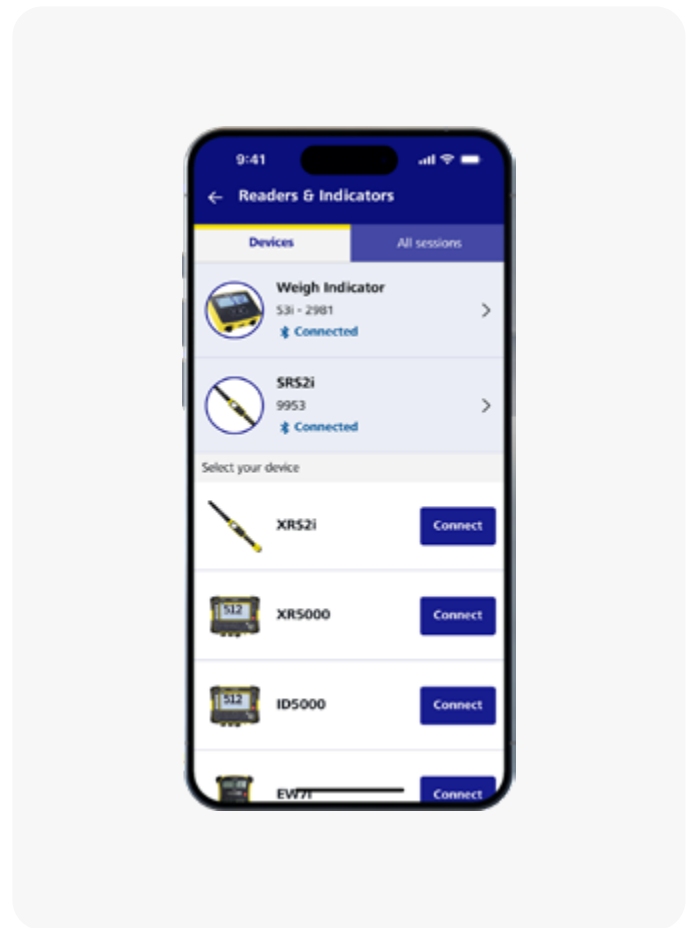


**INTEGRATED  
AND SECURE  
MANAGEMENT**

# DATAMARS PRO APP

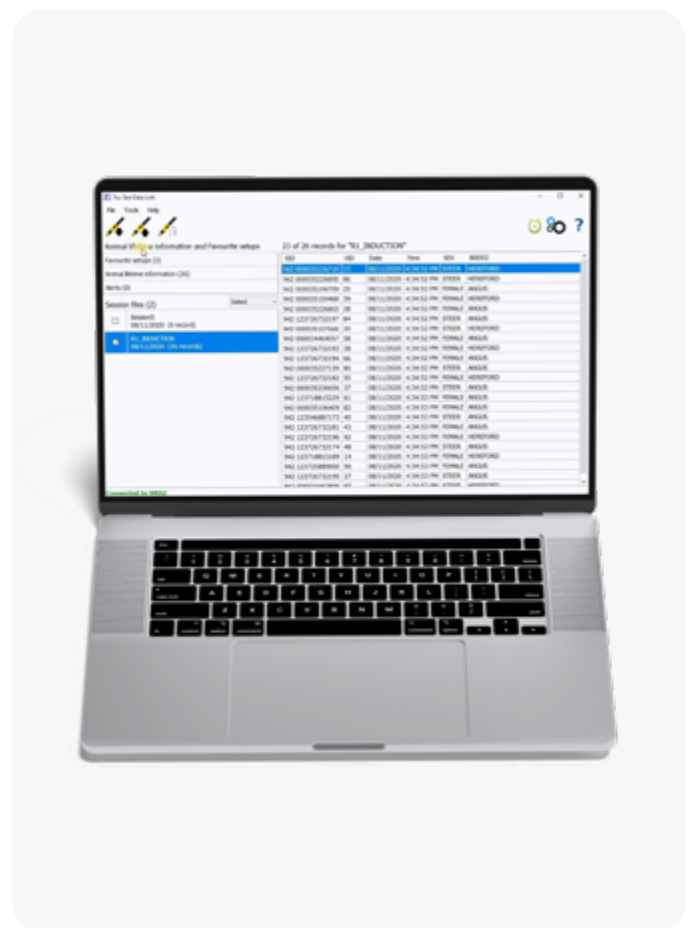
Datamars Pro, a free app for Apple iOS and Android, lets you easily download data from your Tru-Test WiFi and Bluetooth® enabled EID readers or scale indicators.

- ✓ Sends session data to Datamars Livestock for monitoring and report sharing
- ✓ Sends session files by email to the office or other recipients
- ✓ Opens and reviews individual animal records within a session
- ✓ Automatically uploads sessions when a 3G or WiFi connection is restored
- ✓ Records weighing sessions using the S3 indicator



# DATA LINK APP FOR WINDOWS PC

- ✓ Connect Tru-Test EID reader and scale to your Windows PC
- ✓ Easily download and upload recorded information
- ✓ Use PC Data Link for device software updates
- ✓ Send session data to Datamars Livestock software cloud





# THERE IS ALWAYS SOMETHING NEW TO LEARN

Discover the Datamars Livestock Training Academy, a free online platform offering courses on weighing systems, electronic ID readers, data management, and all the solutions that make livestock farming smarter, more efficient, and more sustainable. The goal of the training is to turn every measurement into useful information and every decision into a step toward more informed and accurate management.

 Free Access

 Reviewable Courses

 Training Materials

 Digital Certifications



For more information, visit our website:

 [academy.livestock.datamars.com](https://academy.livestock.datamars.com)



**DATAMARS**  
***Livestock***<sup>TM</sup>



Join our community on  
Instagram